

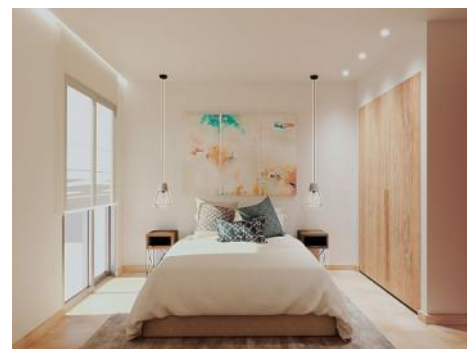
El Terreno
Объект № 118348А




PORTA MALLORQUINA®
Your home. Our passion.

Modern, newly-built designer ground-floor apartment in El Terreno

жилая площадь:	82 m ²	бассейн:	-
спальни:	2	Энергетическая	в процессе
санузел:	2	сертификация:	
балкон или	✓		
терраса:	-	цена:	€ 395.000,-
вид на море:			



El Terreno

Объект № 118348A



Описание объекта:

Exclusive project of 8 newly built homes in the residential neighborhood of El Terreno in Palma, an excellent location close to the Paseo Marítimo de Palma, Santa Catalina and the incredible space of the Bellver Forest just a few minutes walk away.

The philosophy of the building and its homes is to combine an elegant modern design with high quality finishes and the comfort of a cozy home for its inhabitants.

This charming first floor apartment of 72 sqm inside and 10 sqm of terrace, includes a modern living room with integrated kitchen, 2 bedrooms, 2 bathrooms of which one is en suite and a laundry room. A storage room is included in the price of each apartment.

Some equipment features are: Ducted air conditioning, underfloor heating in the bathrooms, fitted kitchen equipped with appliances. Aerotermia for the generation of ACS, heating and cooling. Lacquered oak wood doors, aluminum windows and Majorcan shutters.

We will be pleased to offer you more information about this property, for which we remain at your disposal.

El Terreno

Объект № 118348А



Месторасположения и окрестности:

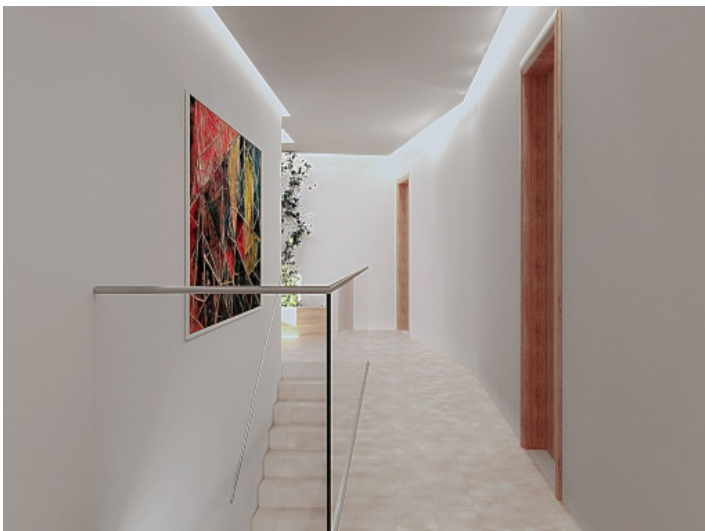
El Terreno is a neighbourhood in the Poniente district of Palma de Mallorca, and is bordered by the sea, the woods of Bellver, and the torrents of Mal Pas and S'Algo.

Upon its hills there are fantastic villas, and charming and colourful low-built houses together with modern high residential buildings with sea views. The streets are narrow and steep, and inclines of 12% are not unusual.

Right next to Terreno is the nature-protection area Bellver Park with the famous Bellver castle. Here you can take long, beautiful walks, or just enjoy the fresh air and the wonderful views of the bay of Palma. The Paseo Maritimo, which follows the sea shore, is close by and makes El Terreno also very attractive for leisure-sport enthusiasts and walkers.

El Terreno

Объект № 118348А



All information is correct to the best of our knowledge. Errors and prior sale excepted. This prospectus is purely for information purposes. Only the notarized deed of sale is legally binding.

PORTA MALLORQUINA • C./ CONQUISTADOR 8, 07001 PALMA
TEL. +34 971 698 242 • INFO@PORTAMALLORQUINA.COM