

Ciudad Jardin

Объект № 120766




PORTA MALLORQUINA®
Your home. Our passion.

Penthouse-apartment with private roof terrace, jacuzzi and sea views near to Portixol

жилая площадь:	247 m ²	бассейн:	-
спальни:	3	Энергетическая	e
санузел:	2	сертификация:	
балкон или	✓		
терраса:	✓	цена:	€ 749.000,-
вид на море:			



Ciudad Jardin

Объект № 120766



Описание объекта:

This penthouse-apartment, newly renovated in 2022, is situated in a small residential complex a short walk from the white, sandy beach of Ciudad Jardin, and within easy reach of Portixol, Palma, and the airport.

Its constructed area of 145 sqm is distributed over 3 bedrooms, 2 bathrooms, one of which is en suite, an open living/dining area, and a fully-equipped fitted kitchen with adjacent utility room. The main bedroom has access to a 5.65 sqm covered balcony.

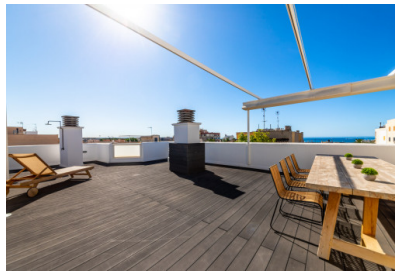
During renovation and the coordinated furnishing attention was paid to the creation of a modern Mediterranean living style. The highest-quality micro-cement floors, Siemens kitchen appliances, and efficient hot/cold air conditioning are included in the specifications.

Highlights of this lovely property include not only the views of the Mediterranean from the living area, but also the 96.41 sqm private roof terrace with its own jacuzzi, retractable pergola, and outdoor dining area with panoramic views over the Club Nautico, Cala Gamba, and the ocean.

Further features of this unique apartment include an underground parking space with storage room, and full furnishings.

Ciudad Jardín

Объект № 120766



Месторасположения и окрестности:

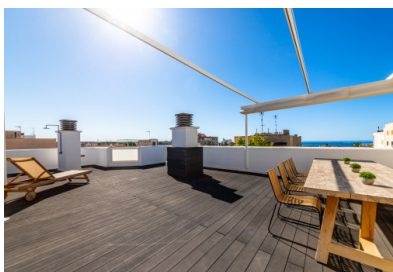
Ciudad Jardín is situated in an excellent location with convenient connections to Palma possible by bicycle, public transport, or in 5 minutes by car.

The district is also very popular with both local people and visitors due to its approx. 1 km long, gently-sloping beach with its adjoining play area, ideal for families with children. In 2008 the beach was granted an award for its cleanliness and its easy access for the disabled. Close by are a number of small, quiet and romantic bays.

The 'Paseo Marítimo' with its cycle path offers many sport possibilities together with a large choice of cafes and restaurants. In the immediate area there is also a commercial zone with supermarkets, banks and boutiques.

Ciudad Jardin

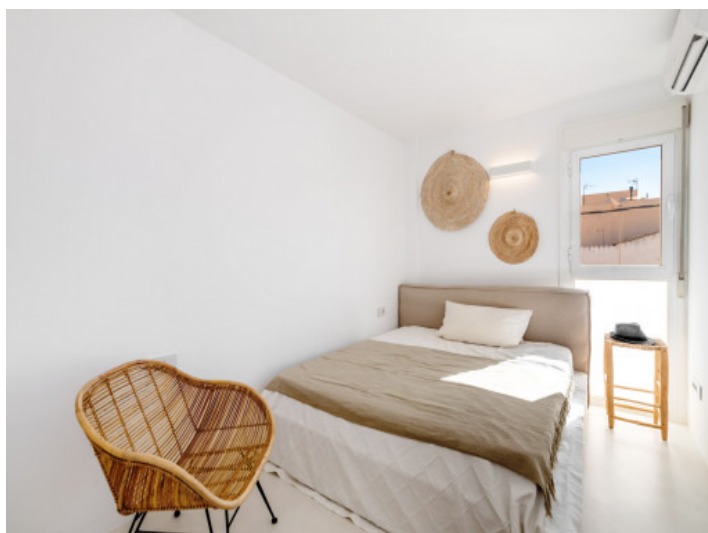
Объект № 120766



All information is correct to the best of our knowledge. Errors and prior sale excepted. This prospectus is purely for information purposes. Only the notarized deed of sale is legally binding.

Ciudad Jardin

Объект № 120766



Escala de la calificación energética

Consumo de energía
kWh/m² año

Emisiones
kg CO₂/m² año

Escala de la calificación energética	Consumo de energía kWh/m ² año	Emisiones kg CO ₂ /m ² año
A más eficiente		
B		
C		
D		
E	0.00	21.89
F		
G menos eficiente		

All information is correct to the best of our knowledge. Errors and prior sale excepted. This prospectus is purely for information purposes. Only the notarized deed of sale is legally binding.