

Вопанова
Объект № 121316




PORTA MALLORQUINA®
Your home. Our passion.

Exclusive duplex with private pool, garden and sea views in Palma

жилая площадь:	169 m ²	бассейн:	✓
спальни:	3	Энергетическая	в процессе
санузел:	3	сертификация:	
балкон или	✓	цена:	€ 1.150.000,-
терраса:	✓		
вид на море:			



Вонапона

Объект № 121316



Описание объекта:

This exceptional property is located in a unique building with a contemporary and exquisite aesthetic, offering great luxury while using high-quality materials and always respecting the environment.

This oasis offers a total of 120 sqm on 2 floors, 2 bedrooms on the second floor, a bathroom and a bedroom with bathroom en suite as well as a laundry room. On this floor you can enjoy panoramic views over the city of Palma.

In the entrance area there is a guest toilet. The kitchen and living room adjoin a terrace and a 48 sqm garden with a beautiful swimming pool.

It is worth mentioning that the property has the highest energy efficiency, so the electricity costs are minimal.

Furthermore, the building offers a fully equipped and air-conditioned gym and an underground parking space with a large storage room is included.

Вонанова

Объект № 121316



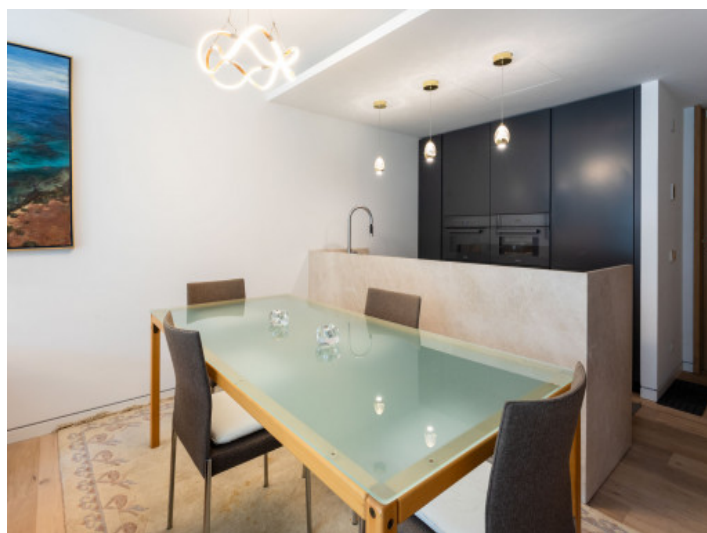
Месторасположения и окрестности:

Due to its elevated location, bordering with the wonderful Parc de Bellver with the famous Bellver castle, the beautiful area of Bonanova provides wonderful views over the whole of the bay of Palma, the open sea and the mountains.

This villa district, although centrally located and with superb connections to the centre of Palma by car or bus, is one of the quietest and most secure districts of Palma. It offers, therefore, the possibility to live in a peaceful area but still be able to easily enjoy all the facilities of the town with its restaurants, bars, cafes and shops.

In addition this neighbourhood itself offers gastronomy, supermarkets, sports locations and clinics, all close by. The shopping centre of Porto Pi, for example, is only a few minutes away by car and offers a huge choice of shops and restaurants. Lovely beaches such as that in Cala Major are also only a few minutes away by car. Bonanova, furthermore, is also ideal for children with the 'Queen's College' which enjoys an excellent reputation internationally.

Вонанова
Объект № 121316



All information is correct to the best of our knowledge. Errors and prior sale excepted. This prospectus is purely for information purposes. Only the notarized deed of sale is legally binding.

Вонанова
Объект № 121316



VIVIENDA 08
DÓPLEX: PLANTA BAJA Y PRIMERA
SUPERFICIE CONSTRUIDA: 200,00 m²
SUPERFICIE ÚTIL: 200,00 m²
DISTRIBUCIÓN: 2 x 100,00 m² (Cada una)

DESCRIPCIÓN	VALOR
Superficie construida	200,00 m ²
Superficie útil	200,00 m ²
Superficie cubierta	200,00 m ²
Superficie libre	200,00 m ²
Superficie total	200,00 m ²

ESCALAS:
0m 1m 2m 3m 4m

RESERVA DE DERECHOS: PORTA MALLORQUINA, S.L. SE RESERVA EL DERECHO DE MODIFICAR SIN AVISO PREVIADO LAS FOTOGRAFÍAS, PLANOS Y DATOS TÉCNICOS QUE SE PRESENTAN EN ESTE PROSPECTO. LOS DATOS TÉCNICOS SON REFERENCIALES Y DE CARÁCTER INFORMATIVO. EL PRECIO Y LAS CONDICIONES DE VENTA SON LAS QUE SE INDICAN EN ESTE PROSPECTO. EL PRECIO Y LAS CONDICIONES DE VENTA SON LAS QUE SE INDICAN EN ESTE PROSPECTO. EL PRECIO Y LAS CONDICIONES DE VENTA SON LAS QUE SE INDICAN EN ESTE PROSPECTO.

All information is correct to the best of our knowledge. Errors and prior sale excepted. This prospectus is purely for information purposes. Only the notarized deed of sale is legally binding.

Вопанова

Объект № 121316



VIVIENDA OB
 DÓPLEX: PLANTA BAJA Y PRIMERA
 SUPERFICIE CONSTRUIDA: 102,70 m²
 SUPERFICIE ÚTIL: 102,70 m²
 DIMENSIONES: 7,50 m x 13,69 m x 13,69 m



DESCRIPCIÓN	VALOR
Superficie construida	102,70 m ²
Superficie útil	102,70 m ²
Superficie cubierta	102,70 m ²
Superficie libre	102,70 m ²
Superficie total	102,70 m ²



Planta 1



Planta Baja

All information is correct to the best of our knowledge. Errors and prior sale excepted. This prospectus is purely for information purposes. Only the notarized deed of sale is legally binding.

PORTA MALLORQUINA • C./ CONQUISTADOR 8, 07001 PALMA
 TEL. +34 971 698 242 • INFO@PORTAMALLORQUINA.COM