

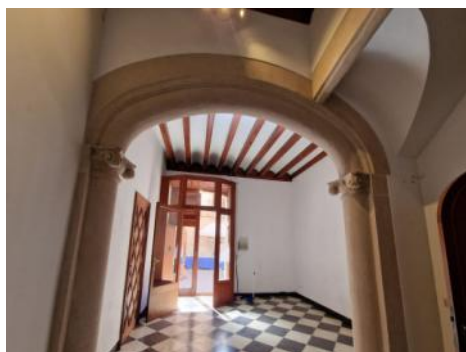
Ллусмајор
Объект № 121675




PORTA MALLORQUINA®
Your home. Our passion.

Traditional Mallorcan manor-house in a prime location in Lлусмајор

жилая площадь:	224 m ²	Энергетическая	е
участок:	224 m ²	сертификация:	
спальни:	5		
санузел:	3		
вид на море:	-	цена:	€ 575.000,-



Ллустајор

Объект № 121675



Описание объекта:

Welcome to this historic manorial town-house in the heart of Lluçmajor, which was built in 1910 and has retained its original traditional charm. The impressive property offers a generous living space of approx. 215 sqm, spread over 3 levels, and represents a real gem for lovers of traditional and historic architecture.

With a total of 9 rooms including 5 spacious bedrooms and 3 bathrooms, the house offers ample space for a large family or for diverse other uses, with authentic stone floors and fireplace in the living area conveying a pleasant and inviting atmosphere.

The property requires renovation, but also offers an excellent opportunity for redesign according to the ideas and requirements of its new owners, combining modern living comfort with historical flair.

Come and take advantage of this unique opportunity to acquire a piece of Mallorcan history in one of the most desirable areas of Lluçmajor. Please do not hesitate to contact us for further information and to arrange a personal viewing.

Ллусмајор

Объект № 121675



Месторасположения и окрестности:

In terms of surface area, Llucmajor is the largest municipal county on the island of Majorca and is located in the south. Its population amounts to 20,000 inhabitants.

The small city includes 4 supermarkets, some well loved cafés and tapa-bars, and even a thrice-weekly fruit and vegetable market, taking place in the very recently renovated town centre, with its Plaza de España and the second largest church on the island.

The picturesque hill-location of Randa on the mountain of the same name, which is the most elevated point in the island's centre, houses three sanctuaries, and is located slightly north of the town. Llucmajor has developed into an economic and popular residential location, due to the new motor-way connection to Palma. The Marriott Son Antem Golf Resort and Spa, and nearby yacht clubs make Llucmajor an interesting and central location for planning pass-times and excursions.

The Es Trenc natural beach, one of the nicest on the island and with a Caribbean similarity, lies just 15 car minutes from Llucmajor.

Цустажор
Объект № 121675



All information is correct to the best of our knowledge. Errors and prior sale excepted. This prospectus is purely for information purposes. Only the notarized deed of sale is legally binding.

Цустажор
Объект № 121675



All information is correct to the best of our knowledge. Errors and prior sale excepted. This prospectus is purely for information purposes. Only the notarized deed of sale is legally binding.

Листајор
Објект № 121675



Escala de la calificación energética	Consumo de energía kWh/m ² año	Emisiones kg CO ₂ /m ² año
A más eficiente		
B		
C		
D		
E	220.10	57.90
F		
G menos eficiente		

All information is correct to the best of our knowledge. Errors and prior sale excepted. This prospectus is purely for information purposes. Only the notarized deed of sale is legally binding.