

# Ллусмајор

Объект № 121970



  
PORTA MALLORQUINA®  
Your home. Our passion.

## Wonderful town-house in Lluçmaior

жилая площадь:	243 m <sup>2</sup>	Энергетическая	в процессе
участок:	110 m <sup>2</sup>	сертификация:	
спальни:	6		
санузел:	5		
вид на море:	-	<b>цена:</b>	<b>€ 699.000,-</b>



# Ллусмајор

## Объект № 121970



### Описание объекта:

This unique house in Lluçmajor presents the perfect opportunity for those seeking an ideal long-term investment in a unique property. Offering more than simply a village-house, the imposing house would be ideal for a family or group and provides great spaciousness and comfort. Due to its equipment and its potential for future renting, it represents an excellent investment possibility.

Built in 1910, the house has been carefully and luxuriously modernised whilst taking great care to preserve its Mallorcan charm. Its 235 sqm of living space is distributed over 3 separate areas offering both great privacy and flexibility.

The ground floor includes a spacious living/dining area, a fully-equipped fitted kitchen, 4 bedrooms, 2 of which are en suite, and a spectacular wine cellar which can be seen from the kitchen and which would be the ideal place for convivial get-togethers with family and friends.

The second, private area is spread over 2 levels and consists of a bedroom with its own bathroom, a terrace overlooking the inner patio, with barrier-free access to the ground floor.

All equipment possibilities have been carefully considered, with high-specification air conditioning, thermally-glazed windows and doors, designer-flooring, and sophisticated lighting.

Located only a few minutes from the market square of Lluçmajor, this exceptional house combines the tranquillity of a private abode with convenient proximity to the town centre. It would be ideal for those seeking not only a property, but also wishing to experience the real Mallorcan way of life.

# Ллусмајор

## Объект № 121970



### Месторасположения и окрестности:

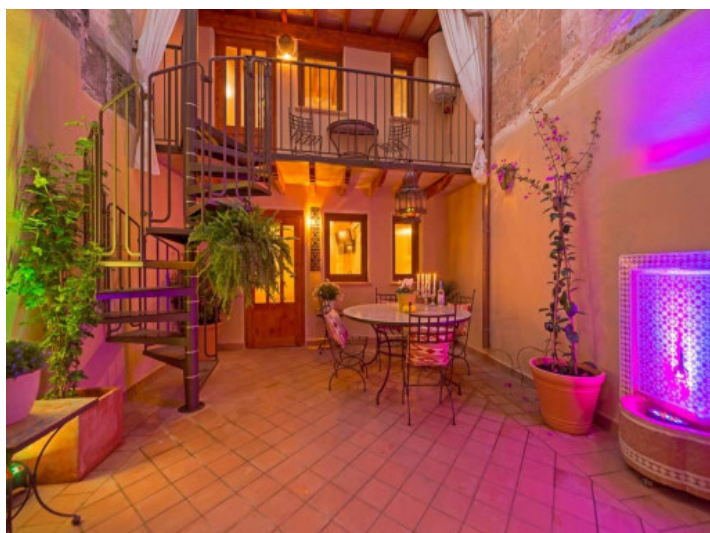
In terms of surface area, Lluçmajor is the largest municipal county on the island of Majorca and is located in the south. Its population amounts to 20,000 inhabitants.

The small city includes 4 supermarkets, some well loved cafés and tapa-bars, and even a thrice-weekly fruit and vegetable market, taking place in the very recently renovated town centre, with its Plaza de España and the second largest church on the island.

The picturesque hill-location of Randa on the mountain of the same name, which is the most elevated point in the island's centre, houses three sanctuaries, and is located slightly north of the town. Lluçmajor has developed into an economic and popular residential location, due to the new motor-way connection to Palma. The Marriott Son Antem Golf Resort and Spa, and nearby yacht clubs make Lluçmajor an interesting and central location for planning pass-times and excursions.

The Es Trenc natural beach, one of the nicest on the island and with a Caribbean similarity, lies just 15 car minutes from Lluçmajor.

Ллустајор  
Объект № 121970



All information is correct to the best of our knowledge. Errors and prior sale excepted. This prospectus is purely for information purposes. Only the notarized deed of sale is legally binding.

Цустажор  
Объект № 121970



All information is correct to the best of our knowledge. Errors and prior sale excepted. This prospectus is purely for information purposes. Only the notarized deed of sale is legally binding.

PORTA MALLORQUINA • C./ CONQUISTADOR 8, 07001 PALMA  
TEL. +34 971 698 242 • INFO@PORTAMALLORQUINA.COM

Цустажор  
Объект № 121970



All information is correct to the best of our knowledge. Errors and prior sale excepted. This prospectus is purely for information purposes. Only the notarized deed of sale is legally binding.

PORTA MALLORQUINA • C./ CONQUISTADOR 8, 07001 PALMA  
TEL. +34 971 698 242 • INFO@PORTAMALLORQUINA.COM